

The PBR 1000L

Biosecure: The bioreactor is automatically cleaned & sterilized before inoculation. Incoming water and nutrients are filtered & sterilized at the point of entry.

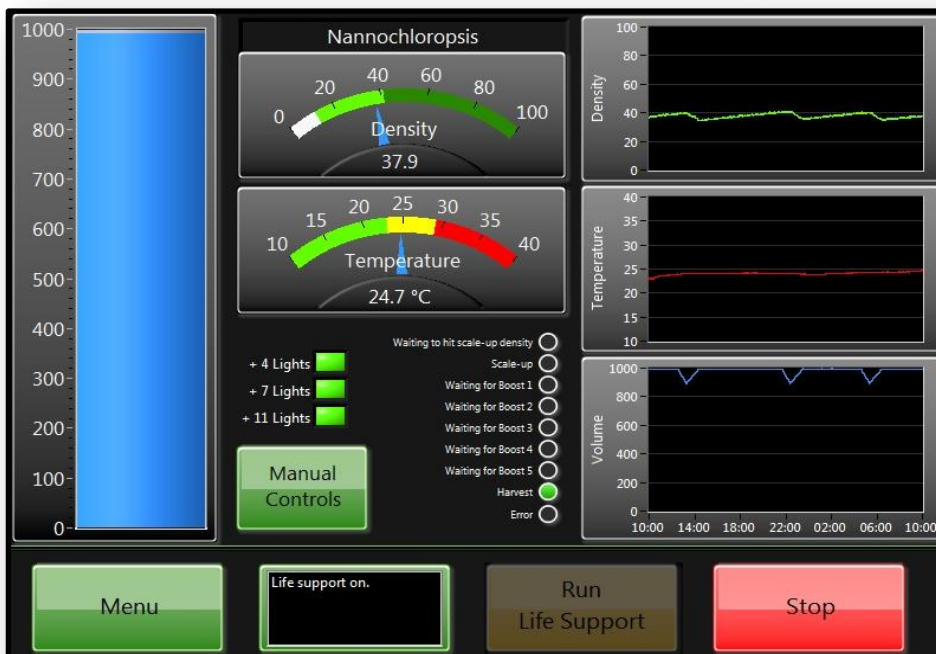
Fully Automated: The bioreactor features automated scale up, nutrient addition, harvest, cleaning, temperature control, etc.



Scales 20L to 1000L in 7-10 days

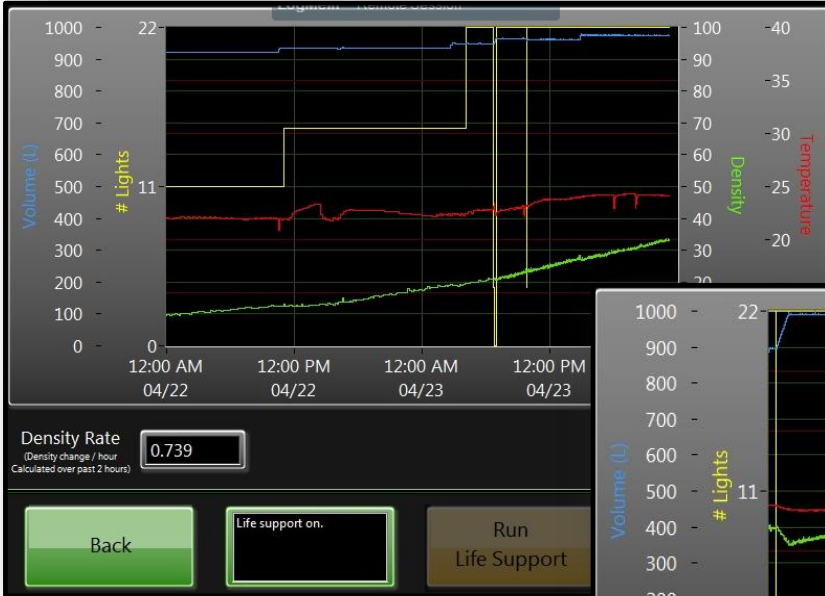


Touch Screen Controls: A user friendly touch screen makes it easy to adjust light levels, nutrient injection rates, harvest density, etc.

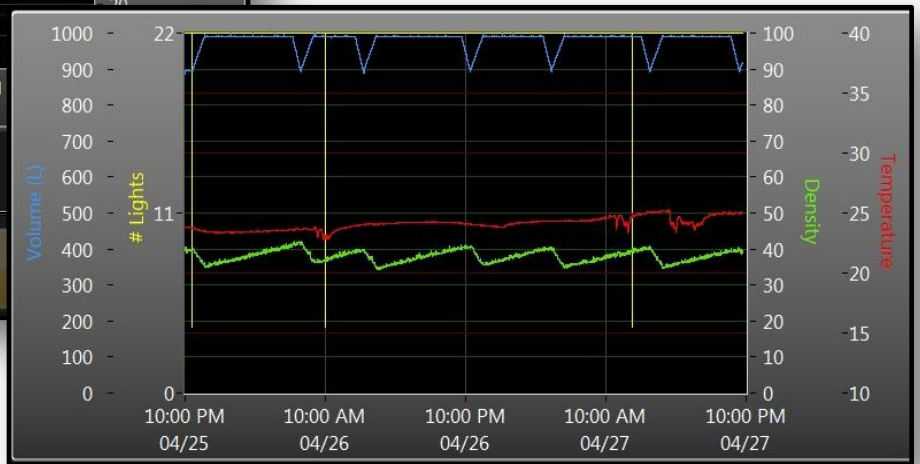


Reactor Dimensions: 4'x4'x7'





Graphing & Data Logging: Culture parameters are logged and graphed in realtime on the screen. The controls, including these graphs, can be accessed remotely from a personal computer.



Production Modes

Batch (7-10 days)	Operating Expenses (per batch)*	Continuous	Operating Expenses (per month)*
Nutrients + CO2	\$10	Nutrients + CO2	\$39
Electricity (at ¢10/KWh)	\$16	Electricity (at ¢10/KWh)	\$71
Labor (1 hour at \$20/hour)	\$20	Labor (3 hours at \$20/hour)	\$60
Total	\$46	Total	\$170

Species	Harvest	Density	Species	Harvest	Density
T-Iso	1000L/batch	20M/ml	T-Iso	350L/day	12M/ml
Nanno		130M/ml	Nanno	450L/day	48M/ml

* Actual OPEX and production numbers may vary between facilities.